

FOTO DO LOCAL - ANTES



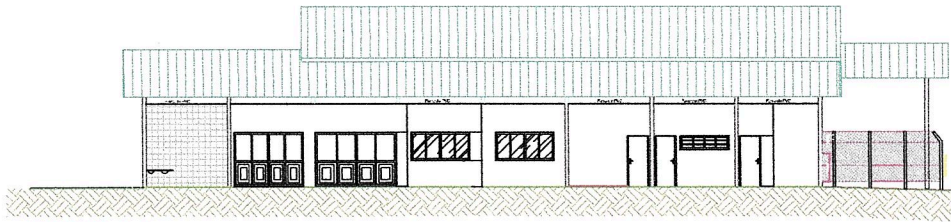
ILUSTRAÇÃO MAQUETE ELETRÔNICA - PROJETO



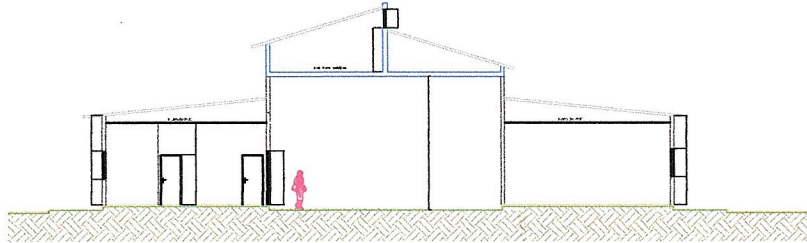
FOTO OBRA CONCLUÍDA



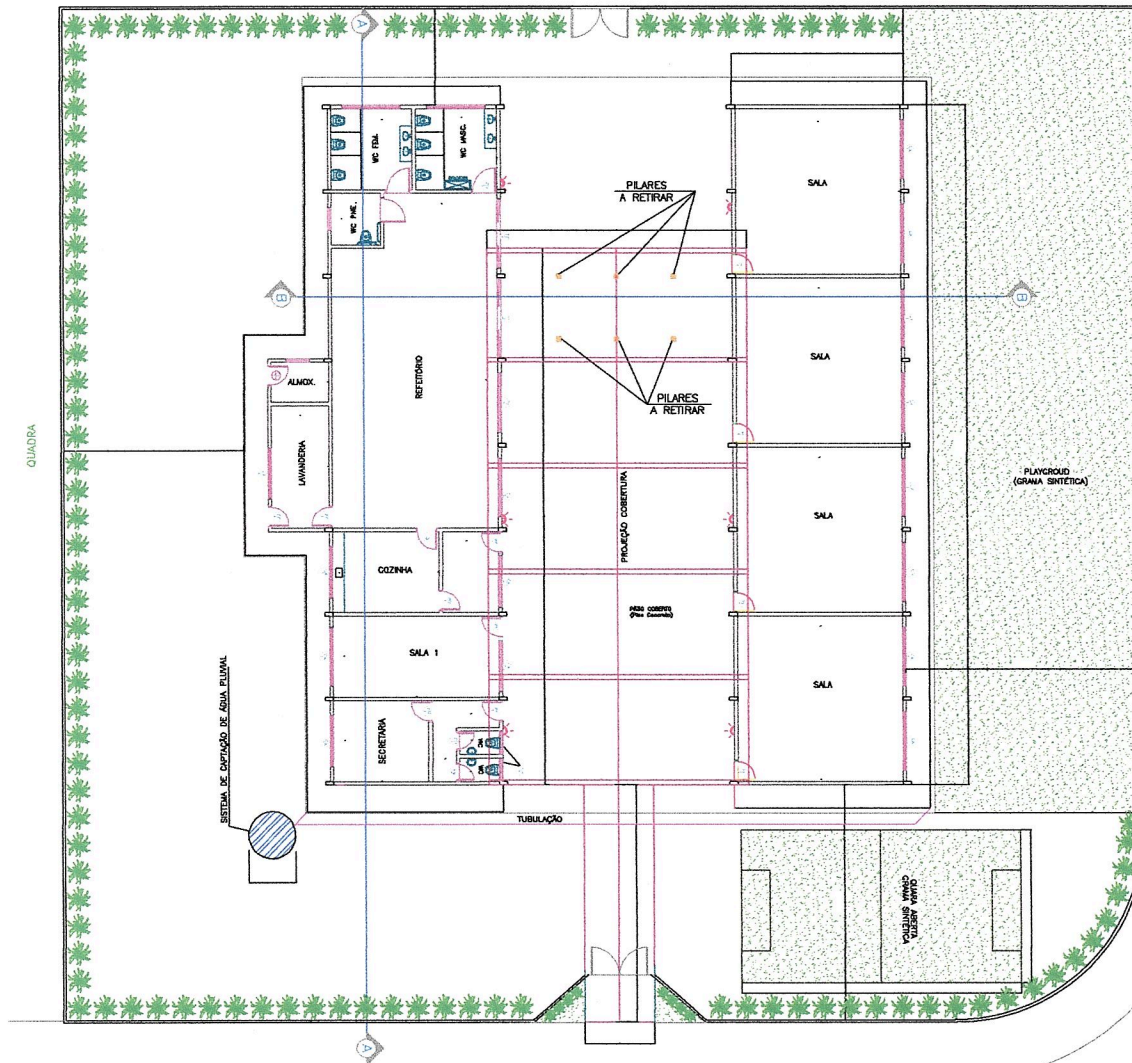
CMB 42804/2021 09/11/2021 14:59



**CORTE A.A.**  
ESCALA 1 : 100



**CORTE B.B.**  
ESCALA 1 : 100



**PLANTA BAIXA**  
ESCALA 1 : 100

RUA AUGUSTO DE CARVALHO

AL. PAULO CESAR FIGUEIREDO

CMB 4580172021 09/11/2021 14:59

OBRA EMEI DULCINÉA  
ILUSTRAÇÃO MAQUETE ELETRÔNICA- PARQUE

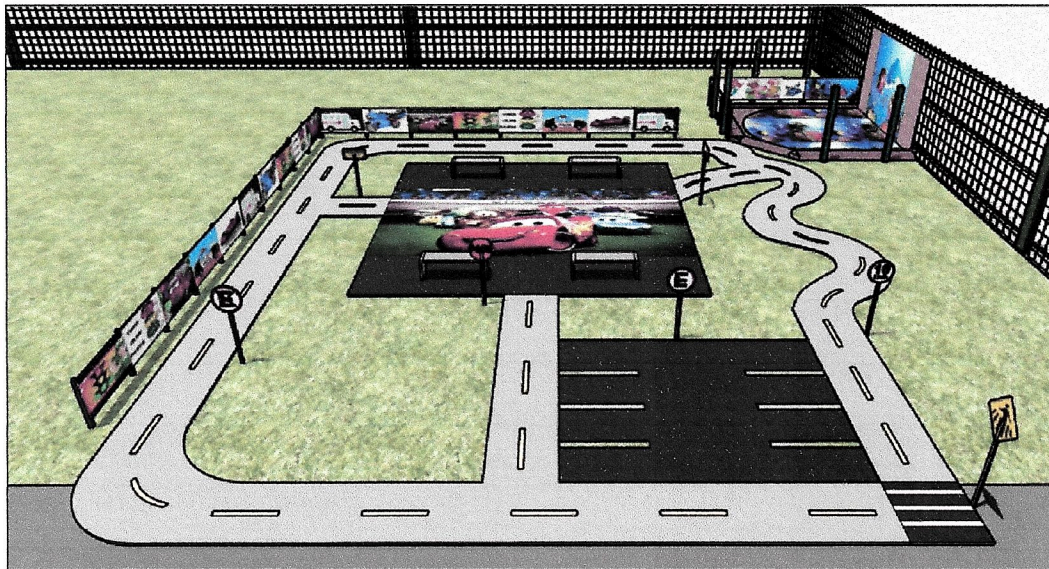
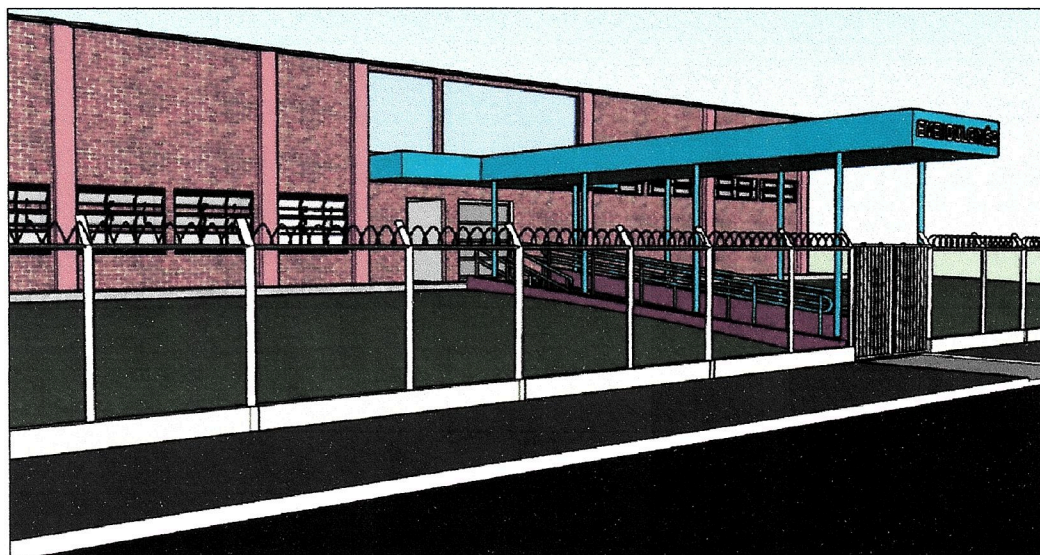
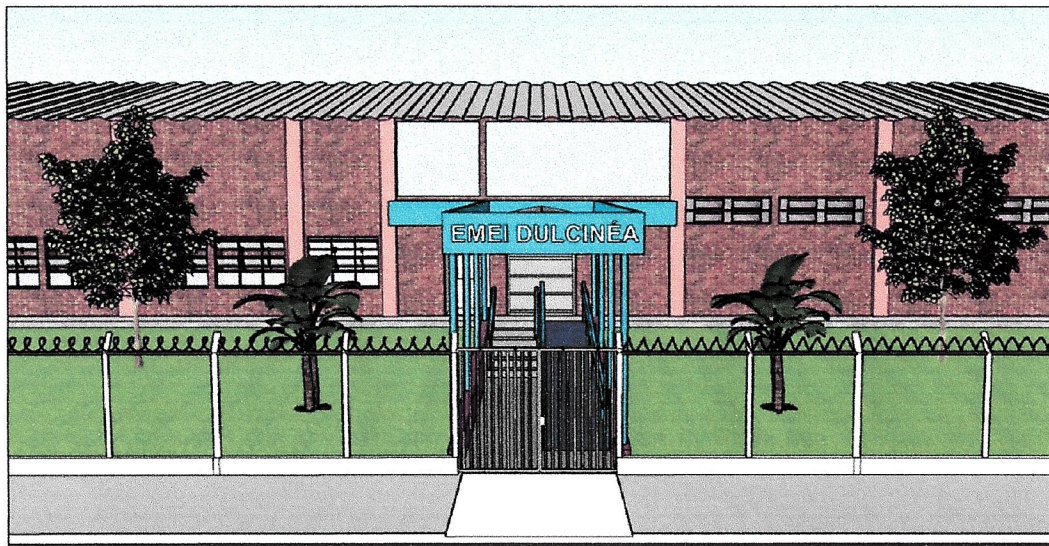


ILUSTRAÇÃO MAQUETE ELETRÔNICA- FACHADA

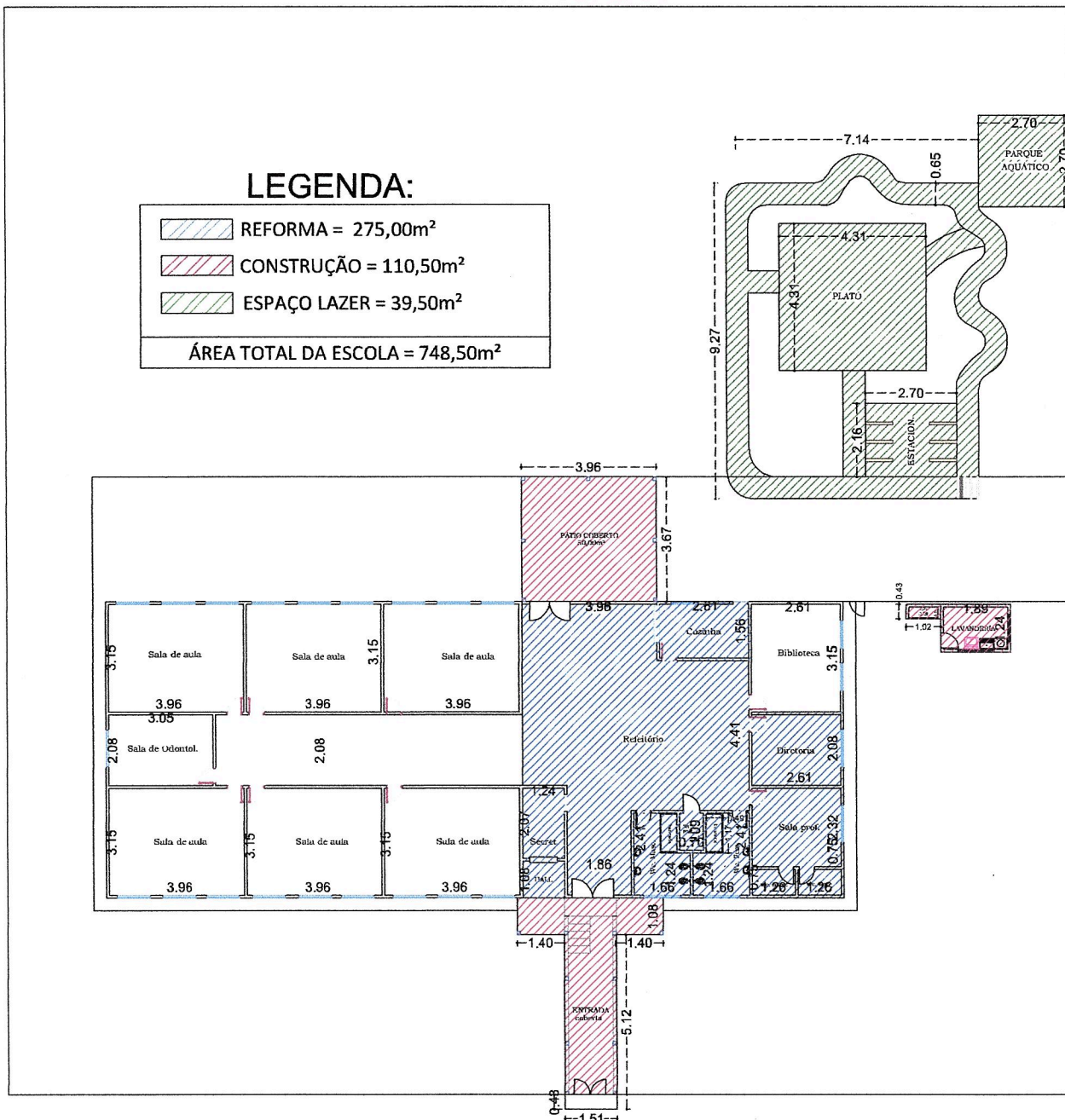


CHB 42601/2021 09/11/2021 14:59

## PLANTA BAIXA

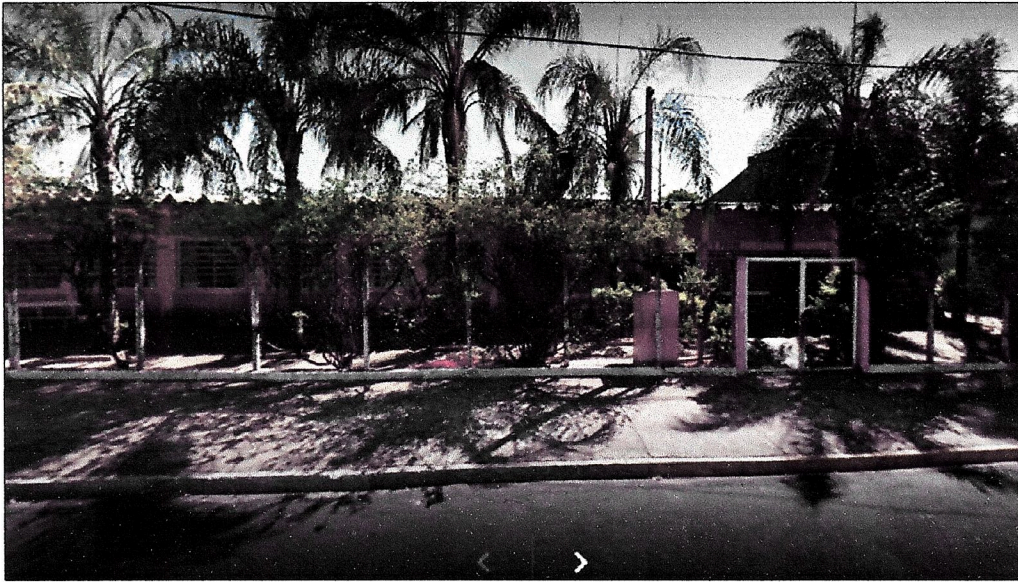
### LEGENDA:

	REFORMA = 275,00m <sup>2</sup>
	CONSTRUÇÃO = 110,50m <sup>2</sup>
	ESPAÇO LAZER = 39,50m <sup>2</sup>
ÁREA TOTAL DA ESCOLA = 748,50m <sup>2</sup>	



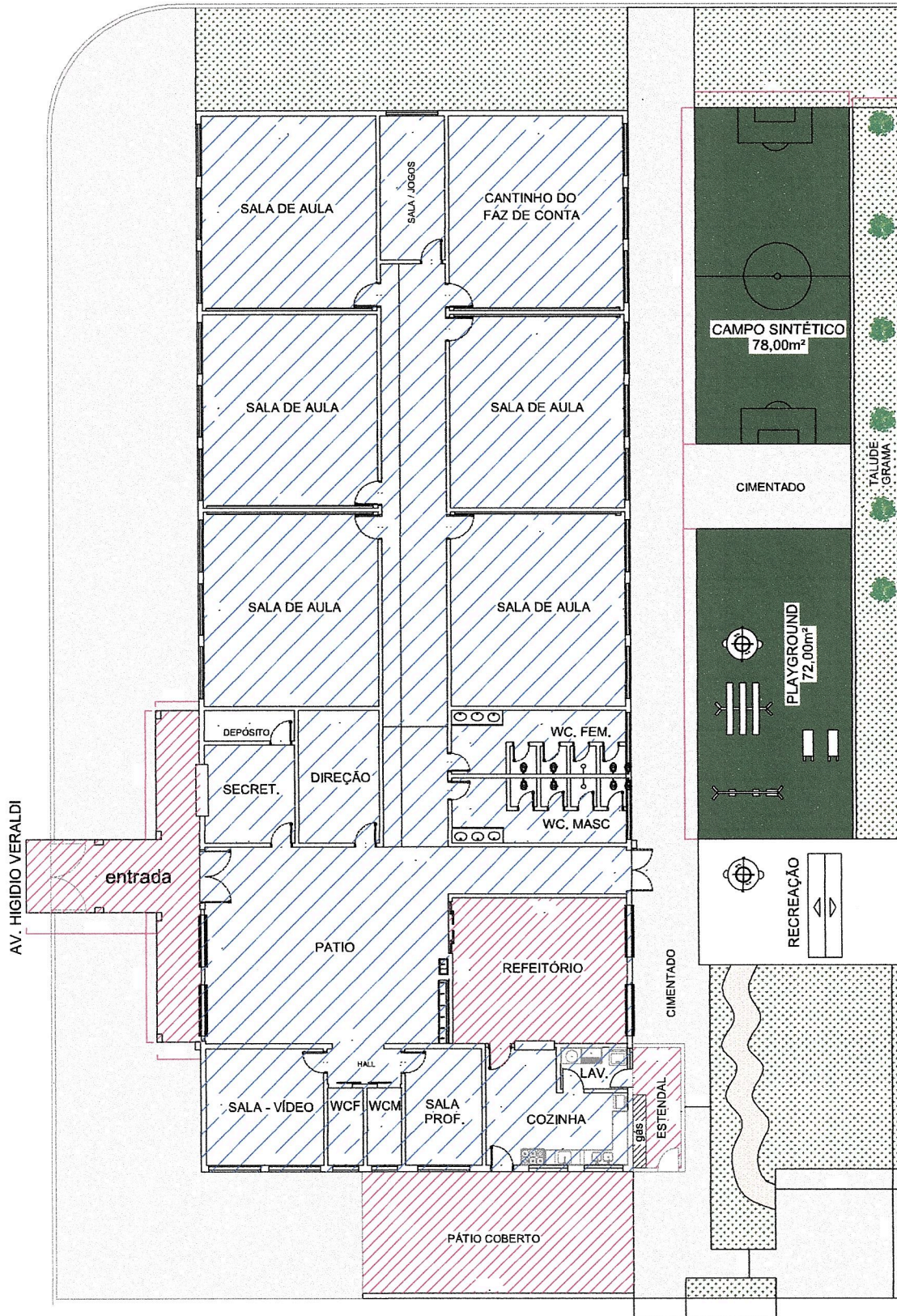
CMB 42801/2021\_09/11/2021\_14:59

## FOTO DO LOCAL - ANTES



## ILUSTRAÇÃO MAQUETE ELETRÔNICA- DEPOIS





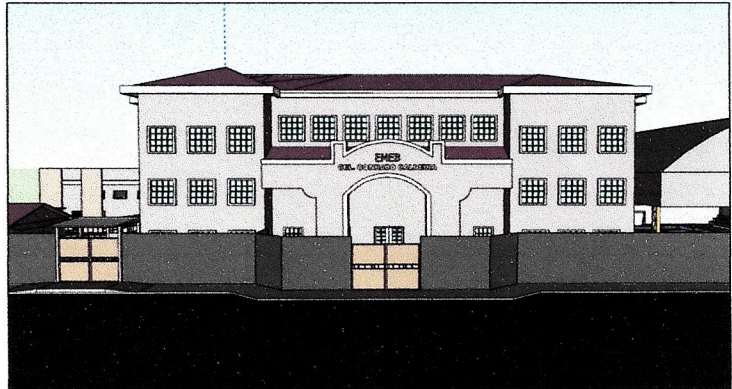
**LEGENDA:**

	REFORMA
	CONST. ÁREA LAZER
	CONSTRUÇÃO

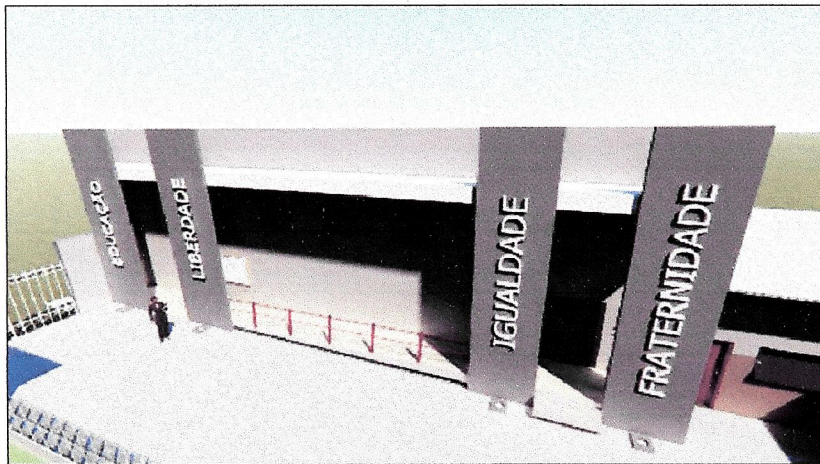
FOTO DO LOCAL - ANTES



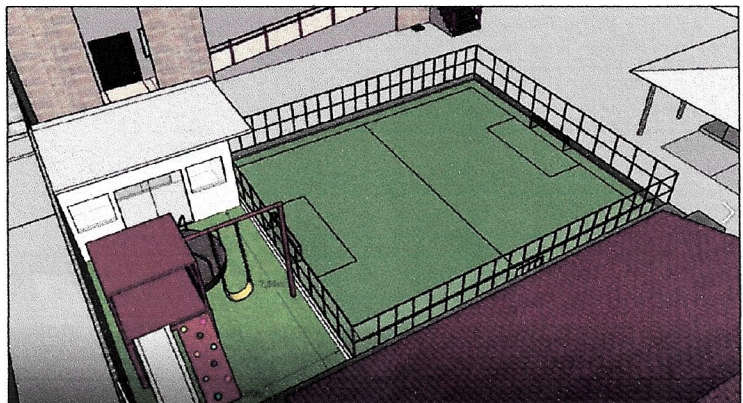
MAQUETE ELETRÔNICA - DEPOIS



MAQUETE ELETRÔNICA - ANFITEATRO



MAQUETE ELETRÔNICA - PARQUE



EMER-42501/2021-09/11/2021-14:59

